
<JSTORM>

Object Pool

JDBC
Connection Pool



JSTORM
<http://www.jstorm.pe.kr>

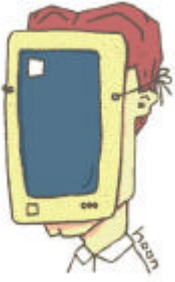
Document Information

Document title:	JAVA XML
Document file name:	DBPool_ .doc
Revision number:	<1.0>
Issued by:	< > kanaloo@orgio.net : < > junoyoon@orgio.net
Issue Date:	<2000/8/03 >
Status:	Draft

Content Information

Audience	JAVA DB
Abstract	Object Pool pool JDBC connection pool
Reference	www.javaword.com
Benchmark information	

Document Approvals

	Signature	date
		
	Signature	date

Revision History

<u>Revision</u>	<u>Date</u>	<u>Author</u>	<u>Description of change</u>

Table of Contents

.....

Basic Object Pool Pattern	6
Connection Pool Pattern.....	7
The JDBC Connection Pool.....	8
Listing 1 JDBCConnection.....	9
Listing 2 JDBCConnectionImpl and JDBCPool.....	9
Conclusion.....	10



Object Pool

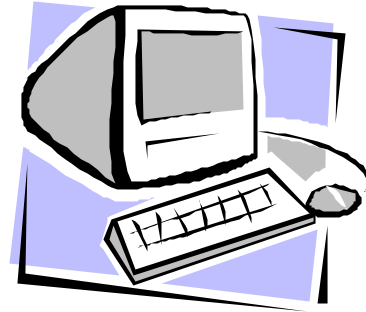
JDBC Connection Pool

Part one of a two-part series

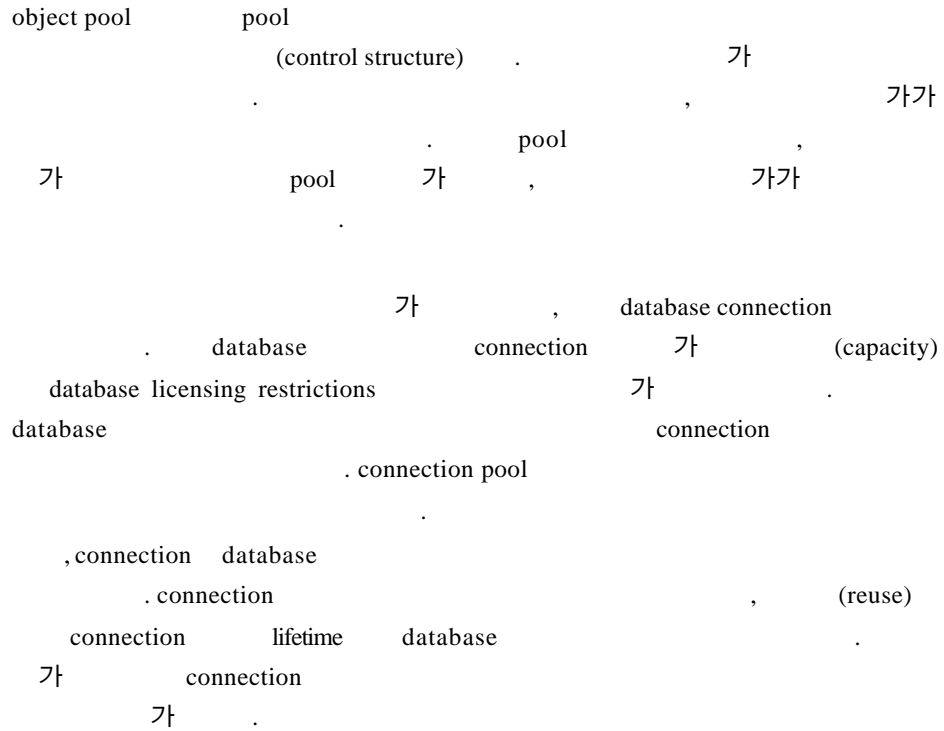
By Wiebe de Jong

:

가 .
가 .
가 .
가 . (time-share)
가 .
가 .
가 .
database connection , database
connection pool connection .
Object Pool pool JDBC
connection pool .

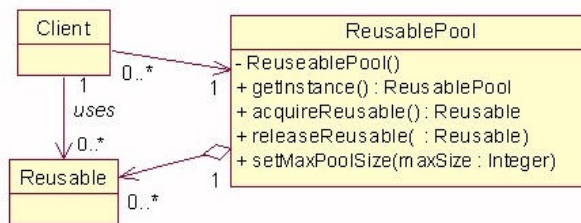


Basic Object Pool Pattern



Mark Grand Object Pool 'Patterns in Java, Volume I'
'Pattern Summaries: Object Pool' . UML

1

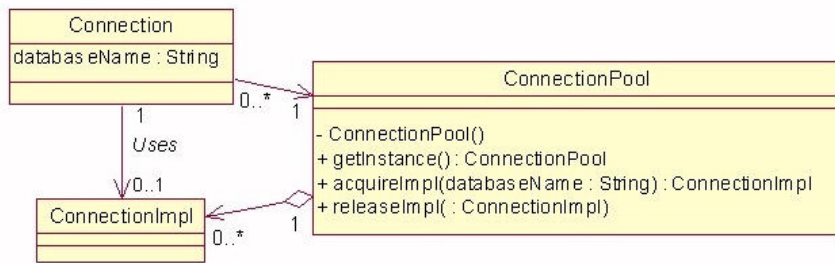


1 ReusablePool

Reusable, ReusablePool, Client 3
가 Reusable
ReusablePool pool, Reusable
(aggregate) (contain)
, Client 가 ReusablePool (acquire)
(release)
ReusablePool Singleton 1
2가 ReusablePool
(association) , ReusablePool private ,
getInstance() 가 Singleton ,
'Global Variables in Java with the Singleton Pattern'
Client Reusable (access) ReusablePool
. Client 가 , Client Reusable
access Reusable pool (maximum
size)

Connection Pool Pattern

Grand Object Pool Pattern Connection
Pool Management



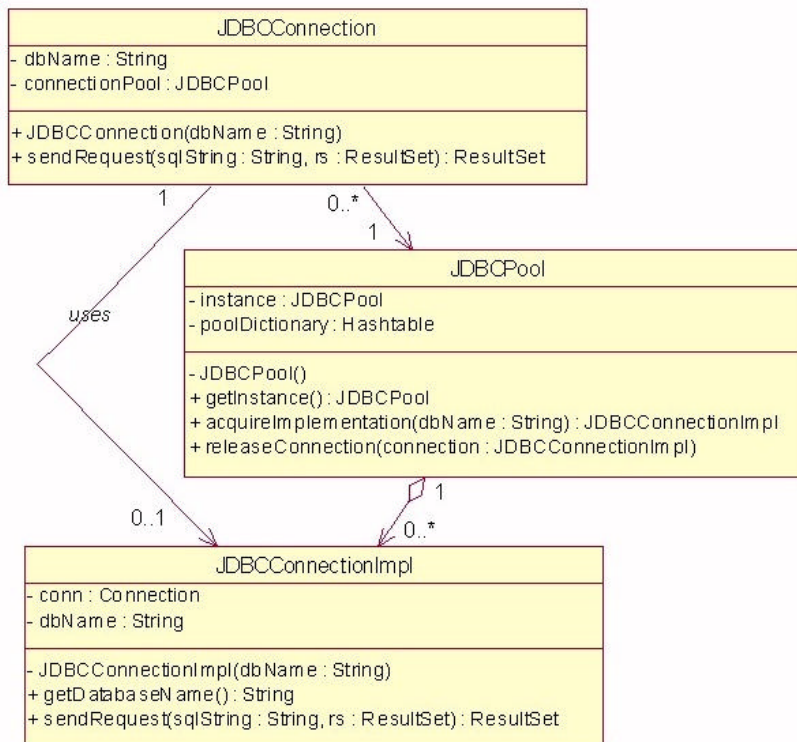
2 ConnectionPool

database connection database (logic) (encap-
sulate) Connection .databaseName database
(identifier) , 가 ConnectionImpl
. 1 2 UML 가
Connection 가 1 ConnectionImpl
database connection ,
가 , Connection ConnectionPool ConnectionImpl
.Connection , pool . pool
, pool ConnectionImpl

ConnectionImpl 가 maxPoolSize , pool
 ConnectionImpl , 가
 ConnectionImpl pool
 , 가
 , acquireImpl() 가 (exception)
 가
 maxPoolSize 가

The JDBC Connection Pool

connection pool 가 database connection ,
 가



3 JDBCPool

가 , 가
 가 connection release , release


```
? 3 JDBCConnection
가 pool

JDBCConnection database (gateway)
Listing 1 . JDBCConnection 가
, database dbName
connection pool JDBCConnectionImpl
database가 ,
JDBCConnectionImpl dbName
```

Listing 1 JDBCConnection

```
SQL ResultSet sendRequest()
database , ResultSet
ResultSet

sendRequest() JDBCConnectionImpl connection pool
Listing 2 sqlString resultSet
sendRequest() (matching) JDBCConnectionImpl
resultSet , JDBCConnectionImpl pool release 가
, resultSet
```

Listing 2 JDBCConnectionImpl and JDBCPool

```
update stored procedure 가 database
, JDBCConnection sendUpdate() callProcedure()
JDBCConnectionImpl
가

connection 가 JDBCConnection-
Impl private JDBCPool
JDBCConnectionImpl

acquireImpl() database connection
, JDBCPool dbName , 가 JDBCConnectionImpl
vector 가 private dictionary dbName
, vector connection
가 JDBCConnectionImpl 가
```

vector가 JDBCConnectionImpl vector ,
JDBCConnection .
JDBCConnection JDBCConnectionImpl ,
releaseImpl() pool .JDBCConnectionImpl
database dbName , dbName 가
connection vector . 가 pool
, vector null . object
vector가 dictionary 가 . vector가 가 가
, vector 가 .

Conclusion

가 가 ,
가 .
. software database connection 가 .
Connection Pool . java database
connection JDBC JDBC Connection Pool
.

pool 가 . maxSize
, update stored procedure 가 가 .
database shutdown ,
(robust) .
e-mail .

About the Author

With over thirteen years' experience in application development, Wiebe de Jong is a Web developer for IMRglobal Ltd. in Vancouver, BC, Canada. He develops Internet and intranet applications for clients using Java, UML, and XML. He also teaches.

- :
- 2000-08 4
 - Jstorm DB .