

---

<JSTORM>

---

## Data Access Command Beans



JSTORM  
<http://www.jstorm.pe.kr>

---

### Document Information

|                     |  |
|---------------------|--|
| Document title:     | Data Access Command Beans                      |
| Document file name: | Data_Access_Command_Beans_jstorm_1.0_final.doc |
| Revision number:    | <1.0>  |
| Issued by:          | < >  |
| Issue Date:         | <2002/3/18>                                    |
| Status:             | final  |

### Content Information

|                       |
|-----------------------|
| Audience              |
| Abstract              |
| Reference             |
| Benchmark information |

# Table of Contents

**Data Access Command Beans ..... 4**



# Data Access Command Beans

---

가 .

가?

( )  
BMP

(JDBC )  
ejbCreate(), ejbLoad(), ejbStore()      ejbRemove()  
JDBC

가

(JDBC )      ( API )  
RDBMS, LEGACY)      (OOBMS,  
가      가

API

JDBC ( , ResultSet , 가 , EJB )  
가  
(RDBMS, ODBMS, LDAP )

"Data Access Command Bean"

DACB("Data Access Command Bean")  
set/get/excute  
. "Data Access Command Bean"

EJB

"Data Access Command Bean"  
et al., 1994) ( 1. "Command" (Gamma, "Data  
Access Command Bean" ).  
, command 가 get  
command가  
next

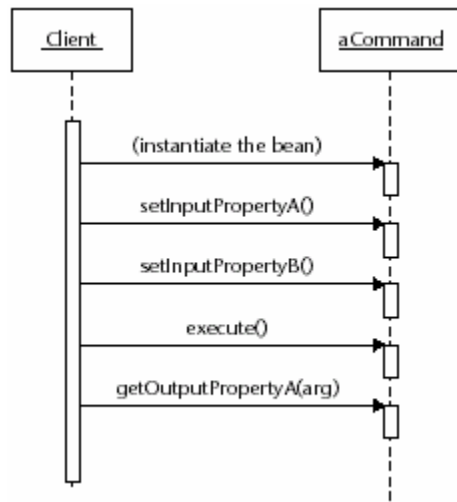
EmployeeServices  
EmployeeServices

EmployeeServices  
"Data Access Command Bean"

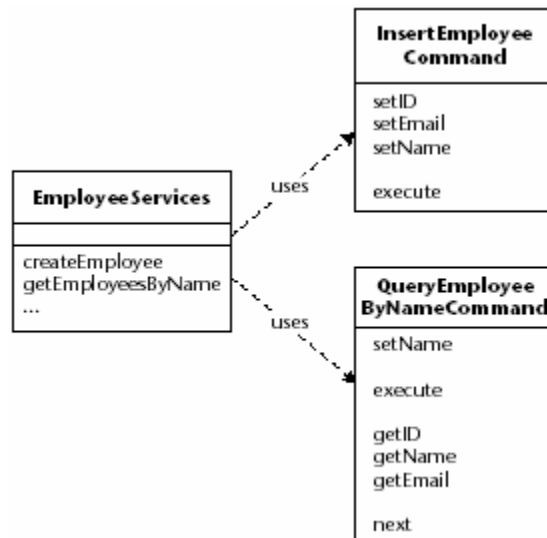
가

DACB

2.



1.



2.

"Data Access Command Bean"  
EmployeeServices

EmployeeServices  
가

InsertEmployeeCommand

```
InsertEmployeeCommand insEmp = null;
try {
    insEmp = new InsertEmployeeCommand();
    insEmp.setEmail("me@home.com");
    insEmp.setId(id);
    insEmp.setName("Ed");
} catch (DataCommandException e) {
    this.ctx.setRollbackOnly();
    throw new EJBException(e.getMessage());
}
```

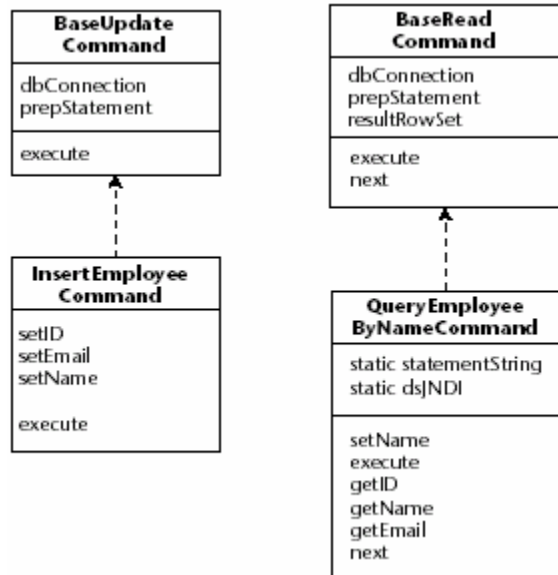
QueryEmployeeByName command  
command가 가

```
try {
    QueryEmployeeByNameCommand query =
    new QueryEmployeeByNameCommand();
    query.setName(name);
    query.execute();
    Vector employees;
    EmployeeDTO anEmployee;
    while (query.next()) {
        anEmployee = new EmployeeDTO(query.getId(),
        query.getName(),
        query.getEmail());
    }
    return employees;
} catch (DataCommandException e) {
    this.ctx.setRollbackOnly();
    throw new EJBException(e.getMessage());
}
```

가

DataCommandException data access command가 throw

"Data Access Command Bean" 3  
 "Data Access Command Bean"  
 BaseReadCommand BaseUpdateCommand abstract class  
 가



3.

"Data Access Command Bean" insert  
 update, delete  
 BaseUpdateCommand (query)  
 BaseReadCommand abstract  
 "Data Access Command Bean" 가  
 가  
 JNDI  
 SQL , 가 get/set





DACB . command 가

bean 가 . 가 command

JDBC  
( ) "Data Access Command Bean"

"Data Access Command Bean"

BMP . DACB Reading JDBC  
Data Transfer RowSet . command bean RowSet

#### Related Patterns

Data Access Command Bean (Matena and Stearns, 2001)

Data Access Object (J2EE Blueprints; Alur, et al., 2001)