
<JSTORM>

J2EE

Scheduling



JSTORM
<http://www.jstorm.pe.kr>

Document Information

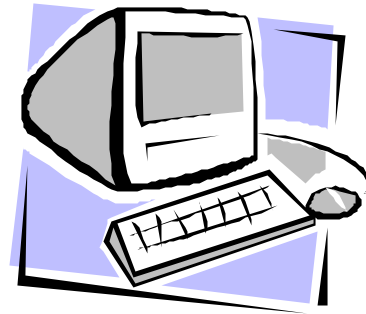
Document title:	J2EE	Scheduling
Document file name:	J2EE	_ .doc
Revision number:	<1.0>	
Issued by:	<	>
Issue Date:	<2000/10/12>	
Status:	final	

Content Information

Audience	J2EE
Abstract	J2EE
Reference	Job Scheduling in J2EE Applications In J2EE (http://theserverside.com/resources/jobj2ee.js) David Sims, Sims Computing, Inc.
Benchmark information	

Table of Contents

J2EE	Scheduling.....	4
	4
	4
	5
	6
	9
	10



J2EE Scheduling

J2EE Task . . . 3

(Customer Relationship Management – CRM)

가

J2EE

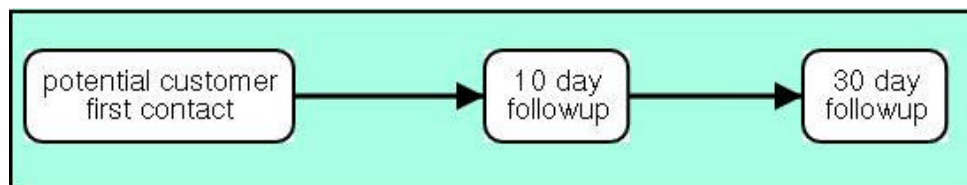
2

3

4

J2EE

5



~~10~~ , 30
~~60~~ , 20
90

가

가
가

37

100

2

90

가

. Unix cron

.cron

가

가

. RMI

. 가 cron

가

. cron AT&T

. BSD Unix
. cron

cron

WebLogic Time Service

s ()
ce JVM Time Servi

가 . Time Services 가
WebLogic

가 가 가

. cron
, , , , , , ,
cron 가

API
5 API cron "0 5 * * 1"
API RMI
가 API

~~SS~~

ㄹㄹ
ㄹㄹ
ㄹㄹ

. ()
7 15 , 7 4) J2EE
가 .

J2EE

XML

JNDI(Java Naming and Directory Interfac

e)

. JNDI

가

. JNDI

factory

JNDI

```
Properties props = new Properties();
```

```
props.setProperty(Context.INITIAL_CONTEXT_FACTORY,  
"com.foo.InitialContextFactory");
```

```
props.setProperty(Context.PROVIDER_URL, "js://remotehost");
```

```
Context ctx = new InitialContext(props);
```

```
Scheduler scheduler = (Scheduler) ctx.lookup("Scheduler");
```

Properties

initial context factory

가

URL(

)

. InitialContext 가

job scheduler

()
JNDI context factory initial context factory
가 가
context URL context lookup JNDI
start
J2EE Look Up

```
Properties props = new Properties();
```

```
props.setProperty(Context.INITIAL_CONTEXT_FACTORY,  
"com.foo.InitialContextFactory");
```

```
Context ctx = new InitialContext(props);
```

```
Scheduler scheduler = (Scheduler) ctx.lookup("SchedulerServer");
```

```
context provider URL context lookup ( )  
가  
가  
JVM  
JNDI 가
```

```
Properties props = new Properties();
```

```
props.setProperty(Context.INITIAL_CONTEXT_FACTORY,  
"com.foo.InitialContextFactory");
```

```
Context ctx = new InitialContext(props);
```

```
Scheduler scheduler = (Scheduler) ctx.lookup("Scheduler");
```

```
, context provider URL  
context lookup  
가 context lookup Helper
```

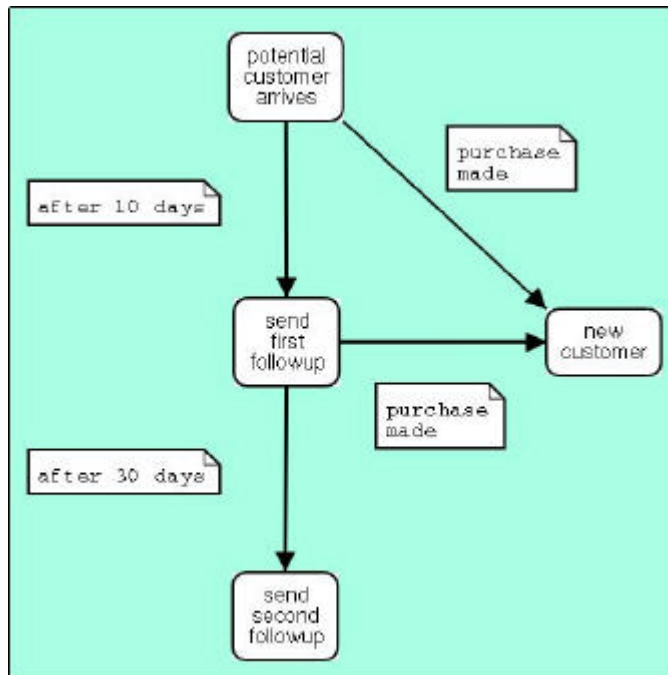

J2EE

listener
RMI, CORBA,
SOAP listener가 .J2EE
JMS session J2EE listener notification session
JMS

(CRM)

10 30

state



state

가

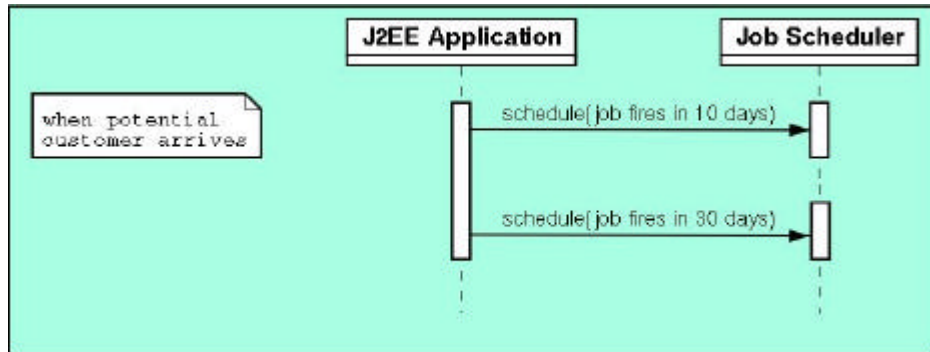
2

가 .10

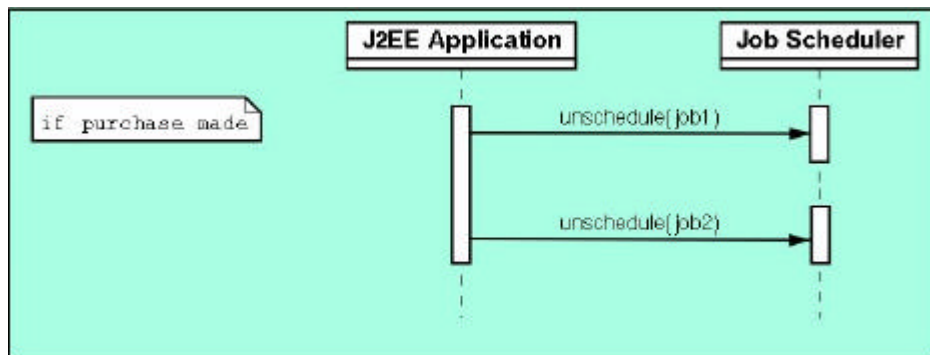
.30

가

2



가



가

가

가

가

. J2EE

가

가

J2EE

.J2EE

가

J2EE

가