
<JSTORM>

Value Object Factory



JSTORM
<http://www.jstorm.pe.kr>

Document Information

Document title:	Value Object Factory
Document file name:	ValueObjectFactory_jstorm_1.0_final
Revision number:	<1.0>
Issued by:	< >
Issue Date:	<2002/3/5>
Status:	final

Content Information

Audience	EJB
Abstract	"Value Object" J2EE "Value Object" . "Value object" 가 "Value Object" ?
Reference	http://www.theserverside.com/resources/patterns_review.jsp
Benchmark information	

Table of Contents

Value Object Factory.....4



Value Object Factory

"Value Object" J2EE "Value Object"

"Value object" 가 "Value Object" ?

"Value Object" 가 . "Domain Vaule
Object" 가 (가 가
) . "Custom Value Object" . "Custom Value
Object"

Object" 10 100 "Value
Object" 가 "Value Object" "Value
Object" . "Value Object"

가 가 .

EJB 1.X
getXXXValueObject/setXXXValueObject .
"Value Object" , set Value
가 가 .
가 "Value Object" ,
가 "Value Object" ,
가 가 가 ,
가 가 .
가 가 .
가 가 .

가
 가 "Value Object"

ValueObjectFactory "Value Object"

```

"Value Object Factory" (
    "Value Object"(
        "Value Object"
        ValueObjectFactory 가
        "Domain Value Object" "Custom Value Object"
        getter (relationship)
        (JCA , JDBC )
        가 가 가
    
```

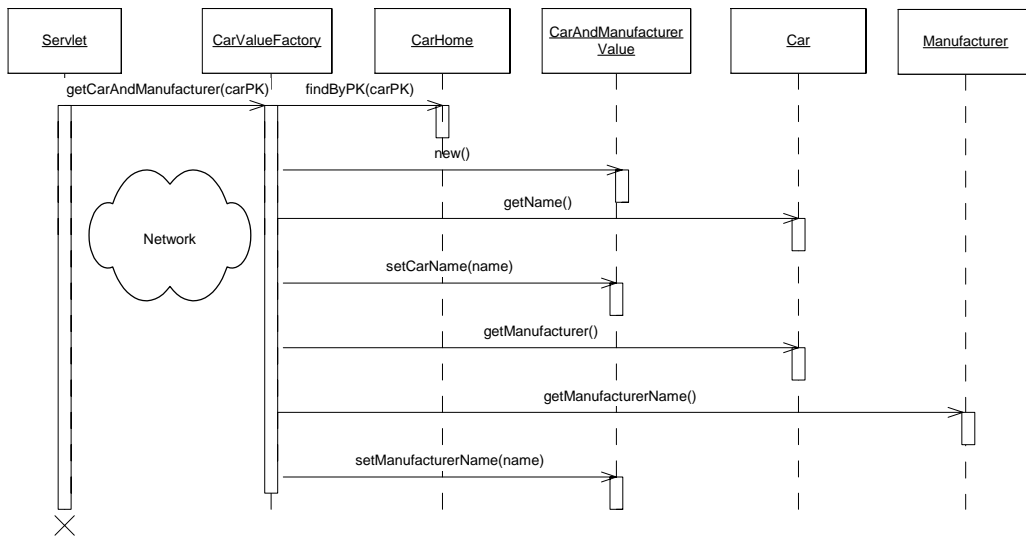
CarValueFactory
<pre> //domain value objects getCarValueObject(CarPK aCarPK) getManufacturerValueObjectForCar(CarPK, aCarPK) //custom value objects getCarEngineValueObject(CarPK aCarPK) getCarBodyValueObject(CarPK aCarPK) getCarChassisValueObject(CarPK aCarPK) getCarAndManufacturerValueObject(CarPK aCarPK) getCarAndDealersValueObject(CarPK aCarPK) </pre>

1. CarValueFactory

가 EJB
 ValueObjectFactory
 가 , "Value"

Object Factory" / , "Value Object Factory" 가 "Value Object"

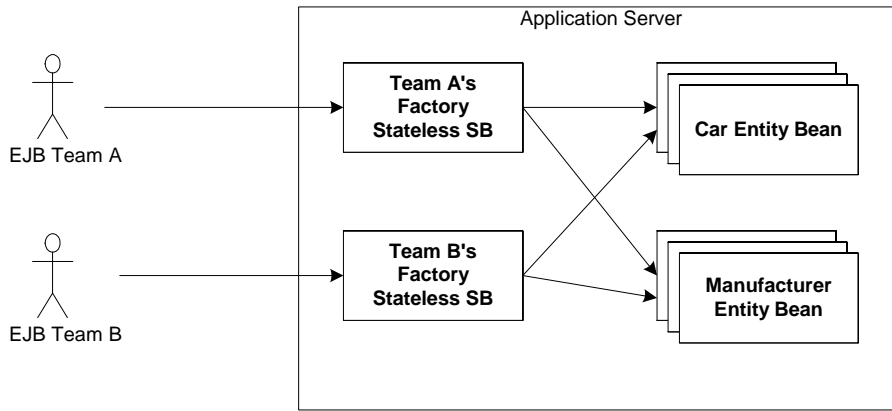
EJB ValueObjectFactory "Value Object"
 EJB "Value Object"
 2.
 CarAndManufacturerValueObject
 CarValueFactory CarValueFactory
 Manufacturer Car
 get "Value Object"



2. Car "Value Factory"

"Value Object Factory" "Value Object"
 "Aggregate Value Object"("Domain
 Value Object" "Domain Vaule Object")
 가 "Value Object"

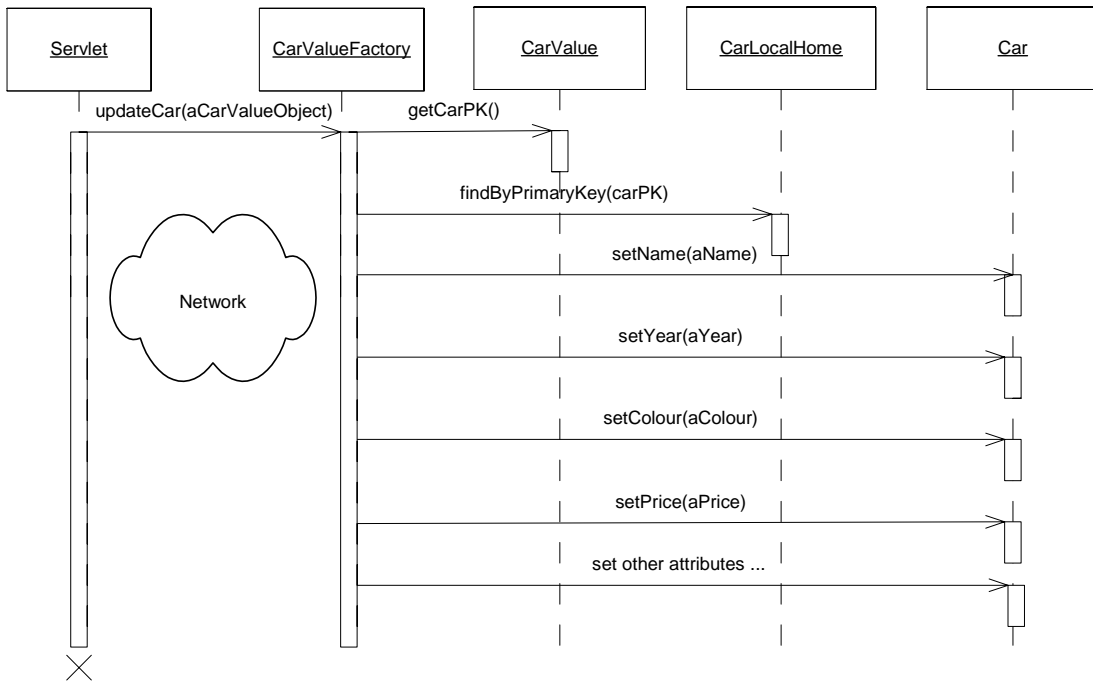
가
 가
 "Value Object
 Factory"
 "Value
 Object"
 "Value
 Object factory"
 가
 "Value Object Factory"
 가
 3.



3. "Value Object Factory"

"Value Object Factory"
 "Value Object Factory"
 Car CarValueFactory
 "Value Object Factory"
 "Session Façade"
 "Value Object Factory"
 가?
 가 "ValueObjectFactory"
 updateXXXEntityBean "Domain Value Object"

set "Value
Object" .
가
Car (: CarValueObject
) 가?
"Custom Value Object" (CarAndManufacturer
Car Manufacturer
가?)
가 Car Manufacturer
UI
(Car , Manufacturer).
Manufacturer "Domain Value Object", Car "Domain Value Object"



4. "Value Object Factory"

"Value Object Factory"

) () 가 가 ()
 , 가

"Value Object Factory"

"Value Object" 가

"Value Object"

가

“Value Object Factory”가 “Session Façade”

“Value Object Factory”
Object”
Object”

J2EE

“Value Object”
“Value
“Value