
<JSTORM>

**Writing Enterprise Applications with Java 2
Platform, Enterprise Edition - part1**



JSTORM
<http://www.jstorm.pe.kr>

Document Information

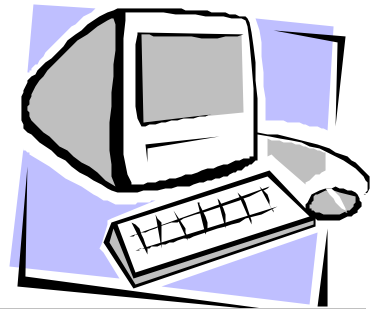
Document title:	Writing Enterprise Applications with Java 2 Platform, Enterprise Edition
Document file name:	Writing_Enterprise_Applications_1_JunoYoon
Revision number:	<1.0>
Issued by:	< > junoyoon@orgio.net
Issue Date:	<2001/04/15>
Status:	final

Content Information

Audience	
Abstract	J2EE Session EJB
Reference	Writing Enterprise Applications with JavaTM 2 Platform, Enterprise Edition By Monica Pawlan (http://developer.java.sun.com/developer/onlineTraining/J2EE/Intro/)
Benchmark information	

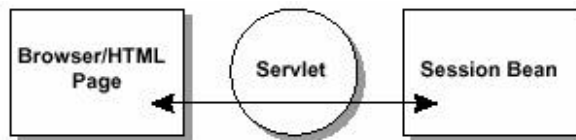
Table of Contents

Lesson 1 –	Session Bean	4
5-Tier	4
J2EE	5
	6
J2EE	7
HTML	7
	9
	11
Session Bean	12
Session Bean	15
J2EE	16
	16
	17
J2EE	17
J2EE	23
J2EE	24
J2EE	26
	26



Lesson 1 - Session Bean

, HTML , Session Bean 5-Tier
 , J2EE J2EE SDK

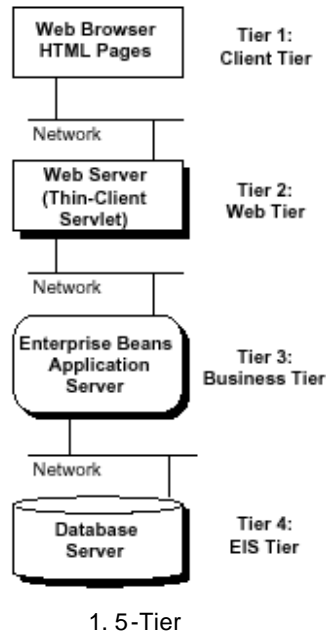


J2EE SDK , 가 ,
 eb , J2EE J2EE SDK J2EE , W
 , J2EE API , ,
 , J2EE 가

5-Tier

5-Tier , HTML
 Session Bean , JNDI (Java Naming and Directory interface™) API
 HTML
 , J2EE Sess
 ion Bean , Session Bean 가
 5-Tier , 3 4
 4 (1.) 3 ,

2 , Web
multi-thread
4 , Web , HTML
JavaServer Pages™ technology , 3



4 , 3
, 4
JavaServer Pages™ XML (Extensible Markup Language) technology

J2EE

, Java 2 SDK Enterprise Edition (J2EE), Version 1.2. 1
Release (<http://java.sun.com/j2ee/download.html>) Java 2 SDK, Standard Edition (J2SE),
Version 1.2 (<http://java.sun.com/jdk/index.html>) 가

, J2EE, J2SE가 monicap J2EE
가

: J2EE J2SE가

Unix:

/home/monicap/J2EE/j2sdkee1. 2.1
/home/monicap/J2EE/jdk1. 2.2

Windows:

\home\monicap\J2EE\j2sdkee1. 2.1
\home\monicap\J2EE\jdk1. 2.2

, J2EE , CloudScape , SSL (Secure S
ocket Layer) Web , , , EJB,
API 가 . ,
.
,
.. 가, JDK
.

Unix:

/home/monicap/J2EE/jdk1. 2.2/bin
/home/monicap/J2EE/j2sdkee1. 2.1/bin

Windows:

\home\monicap\J2EE\jdk1. 2.2\bin
\home\monicap\J2EE\j2sdkee1. 2.1\bin

, 가
가 가 .

Unix:

/home/monicap/J2EE/j2sdkee1. 2.1/lib/j2ee.jar

Windows:

\home\monicap\J2EE\j2sdkee1. 2.1\lib\j2ee.jar

J2EE

J2EE , J2EE . J2EE
가 ,
, J2EE 가 .
J2EE , .
O
O JavaBean
O JavaServer Page (Web)
O
, J2EE 2 J2EE - Session
Bean - HTML WAR (Web Archive)
Session Bean JAR .
WAR JAR J2EE 가
EAR (Enterprise Archive)
, Session Bean
, J2EE J2EE
가 ,

HTML

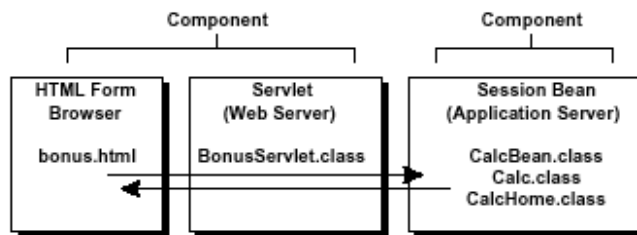
bonus.html HTML . HTML 2.
. bonus.html 가 가 I
D 가 Submit , Bonu
sServlet 가 , Session Bean , Session Bean
. Session Bean ,
, HTML .

Bonus Calculation

Enter social security Number:

Enter Multiplier:

2. HTML



3.

HTML

,HTML BonusServlet
 (alias) . BonusServlet , BonusAlias
 (alias) , 가 HTML Submit , BonusServlet 가
 , Unix , bonus.html 가 /home/monicap/J2EE/ClientCode
 가 . Windows , slash

```

<HTML>
<BODY BGCOLOR = "WHITE">
<BLOCKQUOTE>
<H3>Bonus Calculation</H3>
<FORM METHOD="GET" ACTION="BonusAlias">
<P>
Enter social security Number:
<P>
<INPUT TYPE="TEXT" NAME="SOCSEC"></INPUT>
<P>
Enter Multiplier:
<P>
<INPUT TYPE="TEXT" NAME="MULTIPLIER"></INPUT>
<P>
<INPUT TYPE="SUBMIT" VALUE="Submit">
    
```



```
<INPUT TYPE="RESET">  
</FORM>  
</BLOCKQUOTE>  
</BODY>  
</HTML>
```

, Unix , BonusServlet.java 가 /home/monicap/J2EE/ClientCode
가

- o
- o Session Bean
- o Session Bean
- o Session Bean , HTML

9

import

import

- o javax.servlet :
 . HttpServletRequest , ServletEx
 ception
- o javax.servlet.http : HTTP . HttpServlet
- o java.io : . HttpServlet
 , IOException
- o javax.naming : Session Bean , Ja
 va Naming and Directory Interface (JNDITM)
- o javax.rmi : Session Bean , -

init

BonusServlet init Session Bean ,
 ,
 JNDI (calcs) . ,
 가 CalcHome 가 가 ,

```
        row
        .
        InitialContext ctx = new InitialContext();
        Object objref = ctx.lookup("calcs");
        homecalc = (CalcHome) PortableRemoteObject.narrow( objref,
        CalcHome.class);
```

doGet

```
doGet      request  response      가      .
      가      Request      ,      Response      .
      , 가 Request      , 가      ,
      HTTP 가      request      가
      HTML      response      가      . doGet
      , Request      가      , IOException      ,
      ServletException      .      , do
Get      Calc      , calcBonus      .
```

```
public void doGet (HttpServletRequest request,
                  HttpServletResponse response)
    throws ServletException, IOException {
    String socsec = null;
    int multiplier = 0;
    double calc = 0.0;
    PrintWriter out;
    response.setContentType("text/html");
    String title = "EJB Example";
    out = response.getWriter();
    out.println("<HTML><HEAD><TITLE>");
    out.println(title); out.println("</TITLE></HEAD><BODY>");
    try{
        //Retrieve Bonus and Social Security Information
        String strMult = request.getParameter(
            "MULTIPLIER");
        Integer integerMult = new Integer(strMult);
        multiplier = integerMult.intValue();
        socsec = request.getParameter("SOCSEC");
        //Calculate bonus
        double bonus = 100.00;
        theCalculation = homecalc.create();
        calc = theCalculation.calcBonus(
            multiplier, bonus);
    }catch(Exception CreateException){
        CreateException.printStackTrace();
    }
}
```

```
    //Dis play Data
    out.println("<H1>Bonus Calculation</H1>");
    out.println("<P>Soc Sec: " + socsec + "<P>");
    out.println("<P>Multiplier: " + multiplier + "<P>");
    out.println("<P>Bonus Amount: " + calc + "<P>");
    out.println("</BODY></HTML>");
    out.close();
}
```

```
import javax.servlet.*;
import javax.servlet.http.*;
import java.io.*;
import javax.naming.*;
import javax.rmi.PortableRemoteObject;
import Beans.*;
public class BonusServlet extends HttpServlet {
    CalcHome homecalc;

    public void init(ServletConfig config)
        throws ServletException{

    //Look up home interface
    try{
        InitialContext ctx = new InitialContext();
        Object objref = ctx.lookup("calcs");
        homecalc =
            (CalcHome) PortableRemoteObject.narrow(
                objref,
                CalcHome.class);
    } catch (Exception NamingException) {
        NamingException.printStackTrace();
    }
}

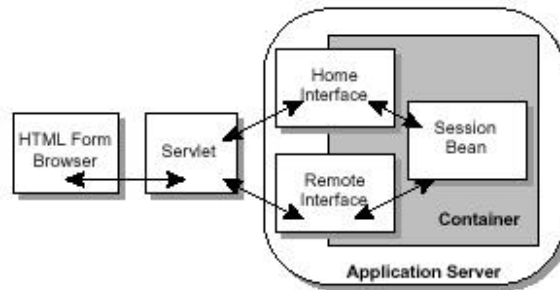
    public void doGet (HttpServletRequest request,
        HttpServletResponse response)
        throws ServletException, IOException {

        String socsec = null;
        int multiplier = 0;
        double calc = 0.0;
        PrintWriter out;
        response.setContentType("text/html");
        String title = "EJB Example";
        out = response.getWriter();
        out.println("<HTML><HEAD><TITLE>");
```

```
out.println(title);
out.println("</TITLE></HEAD><BODY>");
try{
    Calc theCalculation;
    //Get Multiplier and Social Security Information
    String strMult = request.getParameter("MULTIPLIER");
    Integer integerMult = new Integer(strMult);
    multiplier = integerMult.intValue();
    socsec = request.getParameter("SOCSEC");
    //Calculate bonus
    double bonus = 100.00;
    theCalculation = homecalc.create();
    calc =
        theCalculation.calcBonus(multiplier, bonus);
} catch(Exception CreateException){
    CreateException.printStackTrace();
}
//Display Data
out.println("<H1>Bonus Calculation</H1>");
out.println("<P>Soc Sec: " + socsec + "<P>");
out.println("<P>Multiplier: " +
multiplier + "<P>");
out.println("<P>Bonus Amount: " + calc + "<P>");
out.println("</BODY></HTML>");
out.close();
}
public void destroy() {
    System.out.println("Destroy");
}
}
```

Session Bean

Session Bean
가 , Session Bean , Entity
Bean , .. 가
, Entity Bean
, Bean BonusServlet Request
, 가 , S
ession Bean
4 J2EE , Sess
ion Bean 가 가 .



4.

, Session Bean . Unix
 , CalcBean.java, Calc.java, CalcHome.java 3 /home/monicap/J2EE/Beans
 가 . CalcBean
 package Beans , Beans
 Beans 가
 () slash 가
 : Session Bean ,
 Bean ,

CalcHome

```

    BonusServlet Session Bean , Session Bean
    EJBHome , Sessi
    on Bean create 가 . Session Bean
    , CreateException 가
    , RemoteException .
    package Beans;
    import java.rmi.RemoteException;
    import javax.ejb.CreateException;
    import javax.ejb.EJBHome;
    public interface CalcHome extends EJBHome {
    Calc create() throws CreateException,
    RemoteException;
    }
    
```

Calc

CalcBean implements Session Bean
CalcBean implements EJBObject
CalcBean implements java.rmi.RemoteException
CalcBean implements calcBonus

```
package Beans;
import javax.ejb.EJBObject;
import java.rmi.RemoteException;
public interface Calc extends EJBObject {
    public double calcBonus(int multiplier,
        double bonus)
        throws RemoteException;
}
```

CalcBean

CalcBean implements Session Bean
CalcBean implements EJBObject
CalcBean implements java.rmi.RemoteException
CalcBean implements calcBonus
CalcBean implements BonusServlet
CalcBean implements CalcHome
CalcBean implements create
CalcBean implements SessionBean
CalcBean implements Bean
CalcBean implements 가

```
package Beans;
import java.rmi.RemoteException;
import javax.ejb.SessionBean;
import javax.ejb.SessionContext;
public class CalcBean implements SessionBean {
    public double calcBonus(int multiplier,
        double bonus) {
        double calc = (multiplier*bonus);
        return calc;
    }
    //These methods are described in more
    //detail in Lesson 2
    public void ejbCreate() {
    }
    public void setSessionContext(
        SessionContext ctx) { }
    public void ejbRemove() { }
    public void ejbActivate() { }
    public void ejbPassivate() { }
```

```
public void ejbLoad() { }  
public void ejbStore() { }  
}
```

Session Bean

(Windows) , Session Bean (Unix)

Session Bean

Unix

```
#!/bin/sh  
cd /home/monicap/J2EE  
J2EE_HOME=/home/monicap/J2EE/j2sdkee1.2.1  
CPATH=.:$J2EE_HOME/lib/j2ee.jar  
javac -d . -classpath "$CPATH" Beans/CalcBean.java  
Beans/CalcHome.java Beans/Calc.java
```

Windows

```
cd \home\monicap\J2EE  
set J2EE_HOME=\home\monicap\J2EE\j2sdkee1.2.1  
set CPATH=.;%J2EE_HOME%\lib\j2ee.jar  
javac -d . -classpath %CPATH% Beans/CalcBean.java  
Beans/CalcHome.java Beans/Calc.java
```

Unix

```
#!/bin/sh  
cd /home/monicap/J2EE/ClientCode  
J2EE_HOME=/home/monicap/J2EE/j2sdkee1.2.1  
CPATH=.:$J2EE_HOME/lib/j2ee.jar:  
/home/monicap/J2EE  
javac -d . -classpath "$CPATH" BonusServlet.java
```

Windows

```
cd \home\monicap\J2EE\ClientCode  
set J2EE_HOME=\home\monicap\J2EE\j2sdkee1.2.1  
set CPATH=.;%J2EE_HOME%\lib\j2ee.jar;  
\home\monicap\J2EE  
javac -d . -classpath %CPATH% BonusServlet.java
```

J2EE

```

, J2EE
, J2EE bin
. bin , J2EE
.
j2ee -verbose
: Outlook 가 , J2EE 가
가 ,

```

Unix:

```
j2sdkee1.2.1/bin/j2ee -verbose
```

Windows:

```
j2sdkee1.2.1\bin\j2ee -verbose
```

```

verbose ,
[J2EE server startup complete. ] 가 , J2EE
, 가 .

```

```

J2EE ,
. bin , J2EE ,
.
deploytool
가 ,

```

Unix:

```
j2sdkee1.2.1/bin/deploytool
```

Windows:

```

j2sdkee1.2.1\bin\deploytool
: deploytool 가 , JAVA_FO
NTS c:\<font directory> 가 .
, deploytool BasicFileChooserUI NullPointerException ,
가 (ex. c:\) .j2sdke

```


e1.2.1 bin ,

, 4 (5.).

J2EE . Inspecting

가,

가 .

J2E

E

, Inspecting,

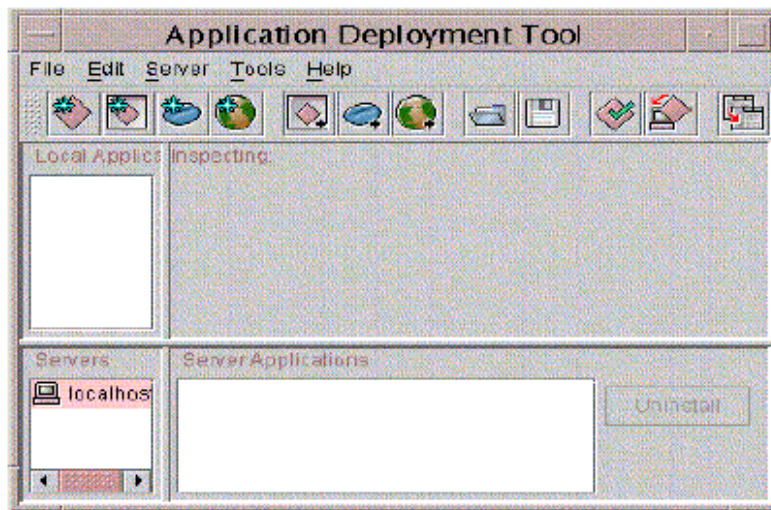
가 .

:

가

가 .

가 .



5.

J2EE

J2EE

가 .

- o J2EE (BonusApp.ear)
- o Bean (CalcBean.jar)
- o Web (Bonus.war)
- o Bean JNDI (calcs)
- o J2EE (BonusRoot)
- o J2EE
- o J2EE , J2EE Enterprise Archive(EAR)

[File menu] [New Application] .

[New Application] 가 .

- o [Application File Name] BonusApp.ear .
- o [Application Display Name] , BonusApp
- o [Browse] , .
- o EAR

[New Application]

- o EAR .
- o , /export/home/monicap/J2EE .
- o [File name] BonusApp.ear .
- o [New Application] .
- o [OK] .

BonusApp Inspector ,
, BonusApp 가 .
, JAR J2EE ,

Session Bean

Bean (Entity Bean Session Bean) JAR (Java Archive) .

[File menu] [New Enterprise Bean] . [Introduction]
[New Enterprise Bean Wizard] 가
. [Next >]() .

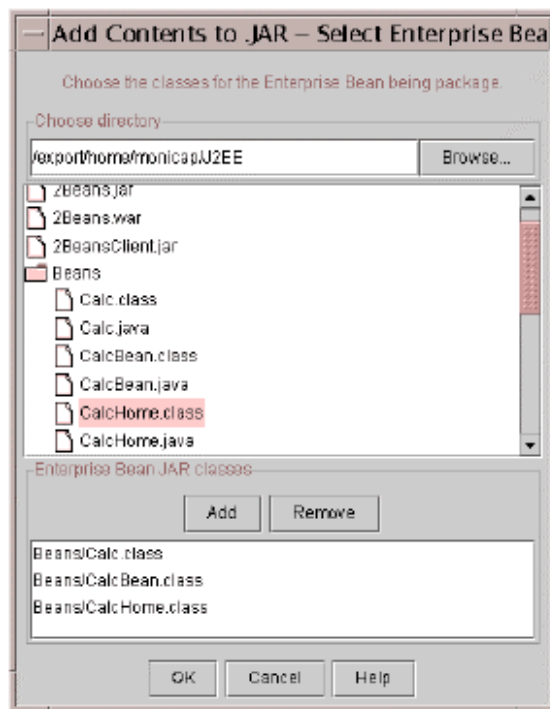
[EJB JAR] .

- o [Enterprise Bean will go in] : BonusApp
[Display name] : CalcJar
[Description] : Session Bean
- o [Add] , 2 , [Add] 2 ,

[Add Files to .JAR] 가 , J2EE . J2EE
, Beans ,

- o Calc.class .
- o [Add] .
- o CalcHome.class .
- o [Add] .
- o CalcBean.class .
- o [Add] .

(): [Add Contents to .JAR] 6.
. Enterprise Bean JAR Bean



6. Session Bean

- o [OK] , EJB JAR . [Contents]
 , Beans/Calc.class, Beans/CalcHome.class, Beans/CalcBean.class
3 가 .
- o [Next >] .

[General]

- o [classname] : Beans.CalcBean
 [Home interface] : Beans.CalcHome
 [Remote interface] : Beans.Calc
 [Bean type] : , (Stateless)
- o (JAR BonusApp
 가) , JAR .
- o [Display Name] : CalcBean
- o [Description]: JAR Bean CalcBean .
- o [Next >] .

[Environment Entries]

- o [Finish] .

J2EE

JAR

가

- o
- o BonusApp , . CalcJar JA
R .
- o CalcJar , CalcBean Session B
ean 가 .

Web

Web (JavaServer PagesTM) WAR (Web Archive)

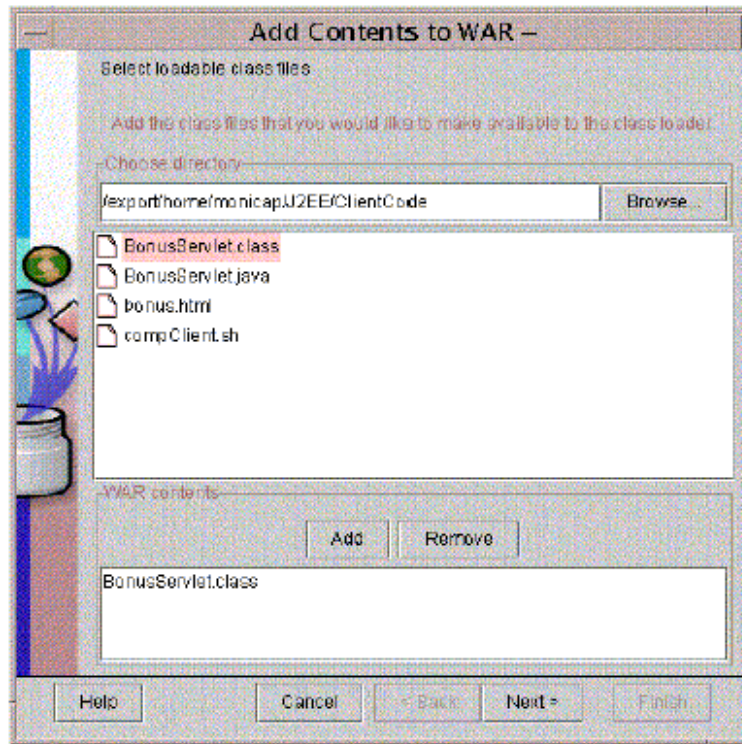
[File] , [New Web Component] . [New Web Component Wizard]
가 . , [Next >] .

[WAR File General Properties dialog box]

- o [WAR file] : BonusApp
[Display name] : BonusWar
[Description]: WAR HTML ()
- o [Add]

[Add Contents to WAR]

- o [Root Directory] J2EE , ClientCode () , ClientCode
- o bonus.html . WAR , bonus.html , ClientNode ()
- o [Add]
: , BonusServlet.class bonus.html 가



7. bonus.html 가

- o [Next >]
- o ClientCode
- o BonusServlet.class
- o [WAR contents] 가 BonusServlet.class , ClientCode () 가 ()
- o [Add]

[Add Contents to WAR] , 8. .

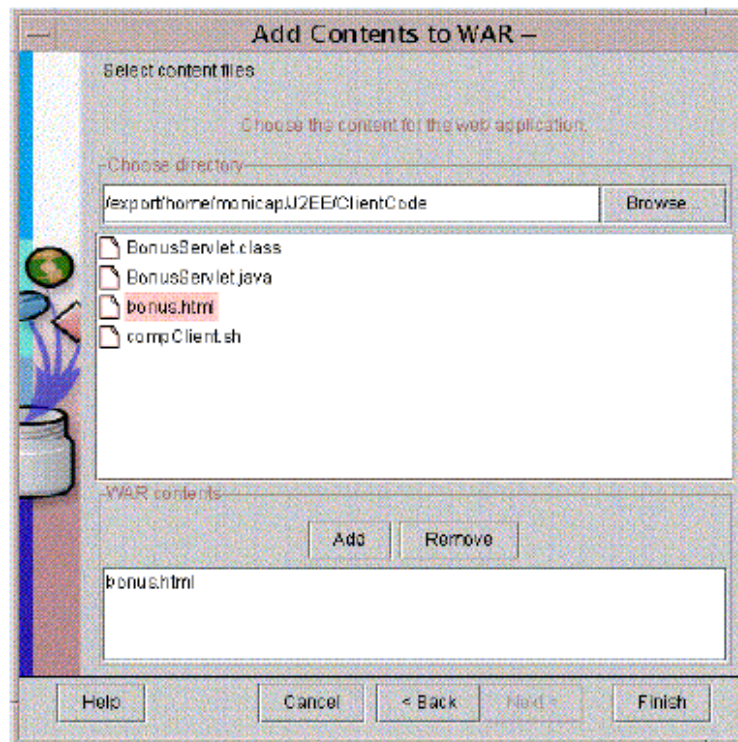
- o [Finish] .

[WAR File General Properties]

- o [Next >] .

[Choose Component Type]

- o [Servlet] .
- o [Next >] .



8. BonusServlet.class 가

[Component General Properties]

- o [Servlet Class] combobox , BonusServlet .
- o (BonusServlet) (Description) .
- o , Startup load sequ
ence .

[Component Initialization Parameters]

- o [Next >]

[Component Aliases]

- o [Add]
- o BonusAlias, (alias)
, bonus.html ACTION
- o [End]

[Contents] , WAR , Web 가

XML , bonus.html , BonusServlet
. WAR , Web-INF/classes
. WAR , BonusServlet public_html
Context Root . 2.2 Web ,

- o
- o
- o

J2EE

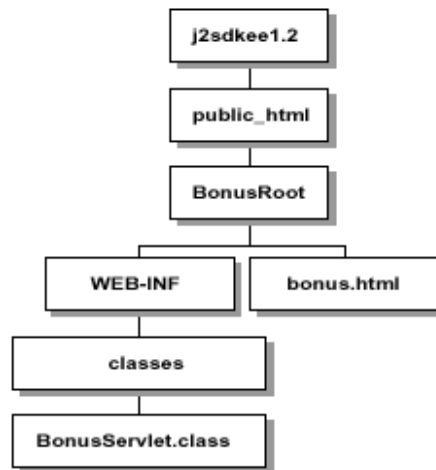
, compiler 가 Bean ,
가

JNDI Name

- o BonusApp [JNDI Name]
- o [JNDI Name] 1 3
, CalcBean
- o [JNDI Name] , calcs JNDI Na
me BonusServlet lookup

Context Root

- o , [Web Contents] ,
- o BonusWar 가 .
- o , BonusRoot .
- o , j2sdkee1. 2.1
- o public_html , BonusRoot 가 b
- onus.html BonusServlet 가 9.



9. Context Root

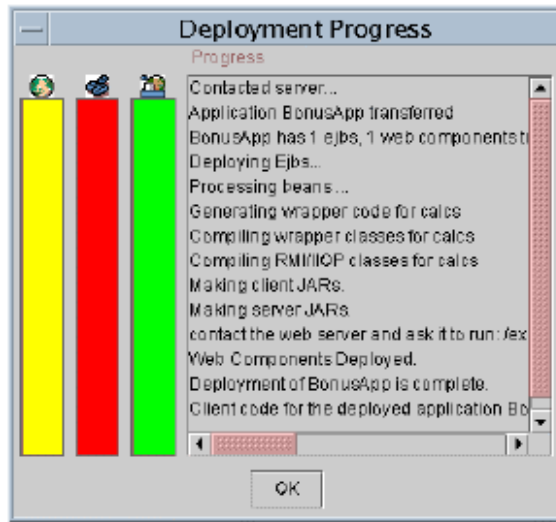
Alias

- o , BonusWar BonusServlet
- o , [Alias] . BonusAlias (
- o BonusAlias , BonusAlias

J2EE

가 , compiler 가 Bean ,

- o BonusApp ,[] [Verify...]() .
- o 가 ,[OK] . , Verify 가
- o Verify 가
- o : 1.2 , tests app.WebURI 가 . , WAR .war (extension) WAR 가 , ,J2EE .
- o [] ,[BonusApp] 가 .[] localhost ,J2EE .
- o :[Jar] , , HT ML , JAR .
- o [Next >] .JNDI calcs . calcs .
- o [Next >] . Context Root가 BonusRoot BonusRoot .
- o [Next >] .
- o [Finish] , 가
- o 가 , 3 가, 10. 가 ,[OK] .



10.

J2EE

Web 8000 . bonus.html , Web
HTML , http://localhost:8000/BonusRoot/b
onus.html URL

: 8000 , ~/J2EE/j2sdkee1.2.1/config web.pro
perties , J2EE

- o social security number
- o multiplier
- o Submit . BonusServlet 가 ,
HTML

Bonus Calculation
Soc Sec: 777777777
Multiplier: 25
Bonus Amount 2500.0

2 , 가 . [Update Application Files] [Update
and Redeploy Application] ,
가 .

- o [Update Application Files] , ,

- 가
- [Update and Redeploy Application] ,