
<JSTORM>

Thinking In Java - Polymorphism, Interface

-

10가



JSTORM
<http://www.jstorm.pe.kr>

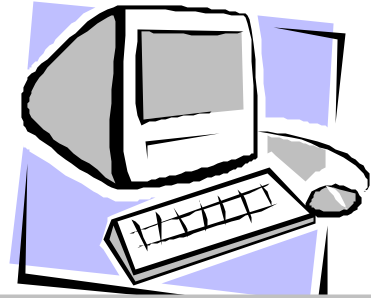
Document Information

Document title:	J2EE - 10가
Document file name:	j2eedanger_HahnJeTaek_j2ee_jstorm_1.0_final.doc
Revision number:	<1.0>
Issued by:	< > neverbeg@nownuri.net
Issue Date:	<2001/07/26>
Status:	Final

Content Information

Audience	J2EE
Abstract	10가 ..
Reference	http://www.javaworld.com/javaworld/jw-03-2001/jw-0330-ten.html
Benchmark information	

J2EE



10가

(design)

(development)

(staying sane)

(over-engineering),

Humphrey Sheil

10가

(senior developer),
(the good),

(architect)
(the bad),

(the ugly))

가

J2EE

10가

가

가

가

- **(Danger name):** .
- **(Project phase):** 가
- **(Project phase(s) affected):**

- **(Symptoms):**
- **(Solution):** 가

- **(Notes):**

- **(Vendor Selection):** J2EE

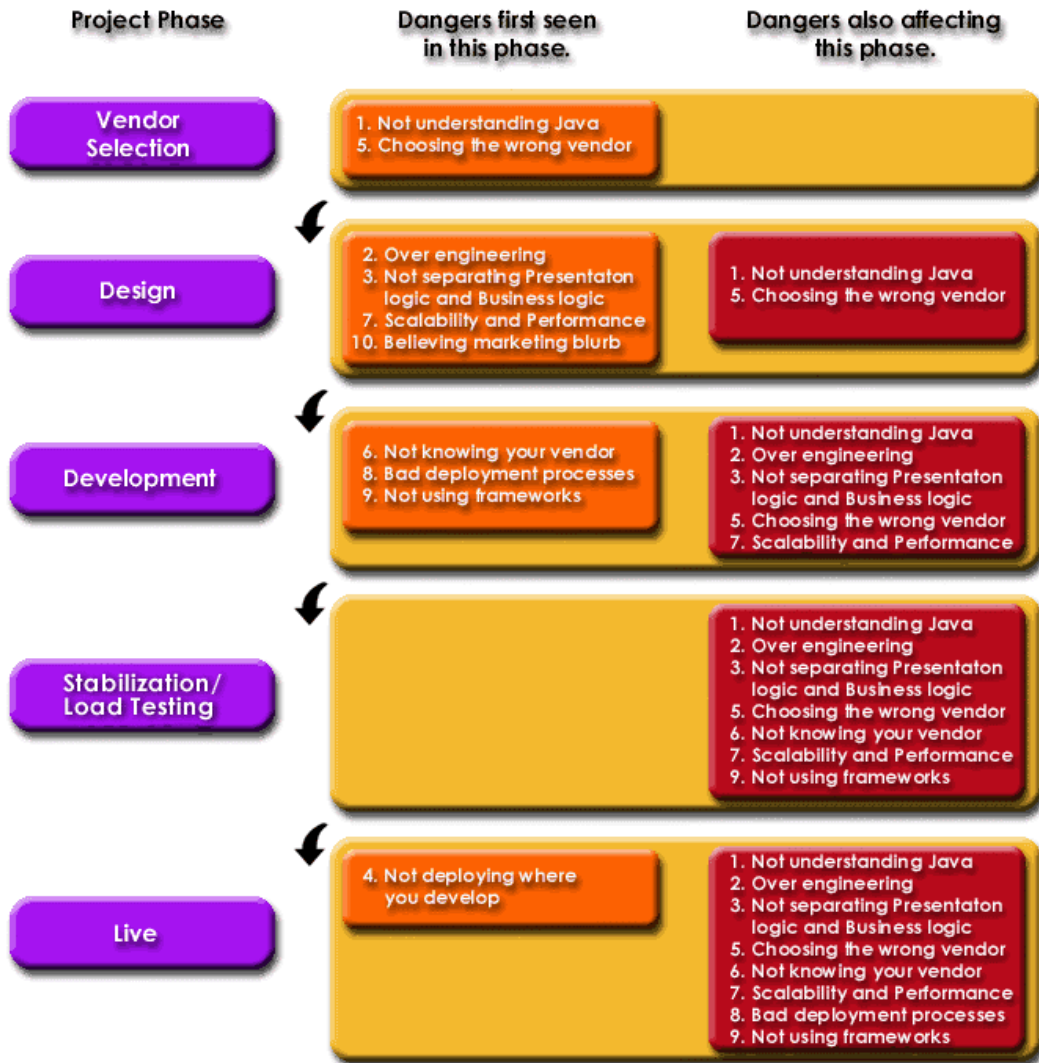
- **(Design):** " (code it and see)"
가
가
(proposed solution) (performance) (modularity)

- **(Development):**

- **(Stabilization/Load Testing):**
(system architect) (project manager)
(number of concurrent users),
(failover scenarios) (system's vital statistics)가 가
(quality)
(low-quality) (slow)

- **(Live):** 가

(the ghosts of past mistakes)



[.1] 가 ((knock-on effect))

10가

1 : , EJB , J2EE .(Not understanding Java, not understanding EJB, not understanding J2EE)

가

(Description) : (Not understanding Java)

:

:

, ,

(System characteristics affected) :

(Maintainability), (scalability),

:

- JDK API
- 가 .()
- 가 (train, generational, incremental, synchronous, asynchronous)
- 가가 -- (dangling references)
- (tradeoff)
- (over-riding) (over-loading)
- java.lang.String() 가
- (pass-by reference) (EJB (pass-by value))
- 가 (nonprimitives) == equals()
- (pre-emptive))
- 가
- (Green) (native)
- (performance tuning))
- JIT JIT 가 (JAVA_COMPILER 가
- 가)
- API
- RMI

:

)

가

가

.(가 가)
가가
:
가가
가?
EJB J2EE
:
: EJB (Not understanding EJB)
:
:
,
:
:
:
- EJB가 (ready pool) (stateless session bean)
- EJB
- 가
- EJB (fire threads), (load native libraries), (attempt to perform I/O)
:
EJB 2.0 (524 !)
EJB 1.1 2.0 (legal action)
18.1 18.2
:
EJB EJB

: J2EE (Not understanding J2EE)

:

:

:

, ,

:

- " EJB(Everything is an EJB)" .
- 가 (manual transaction management).
- (custom security implementation). J2EE (presentation) (back end) (the most complete and integrated security architecture) .

:

J2EE (key component) 가 가

:

J2EE 가(guru)가 가 EJB 가 , J2EE

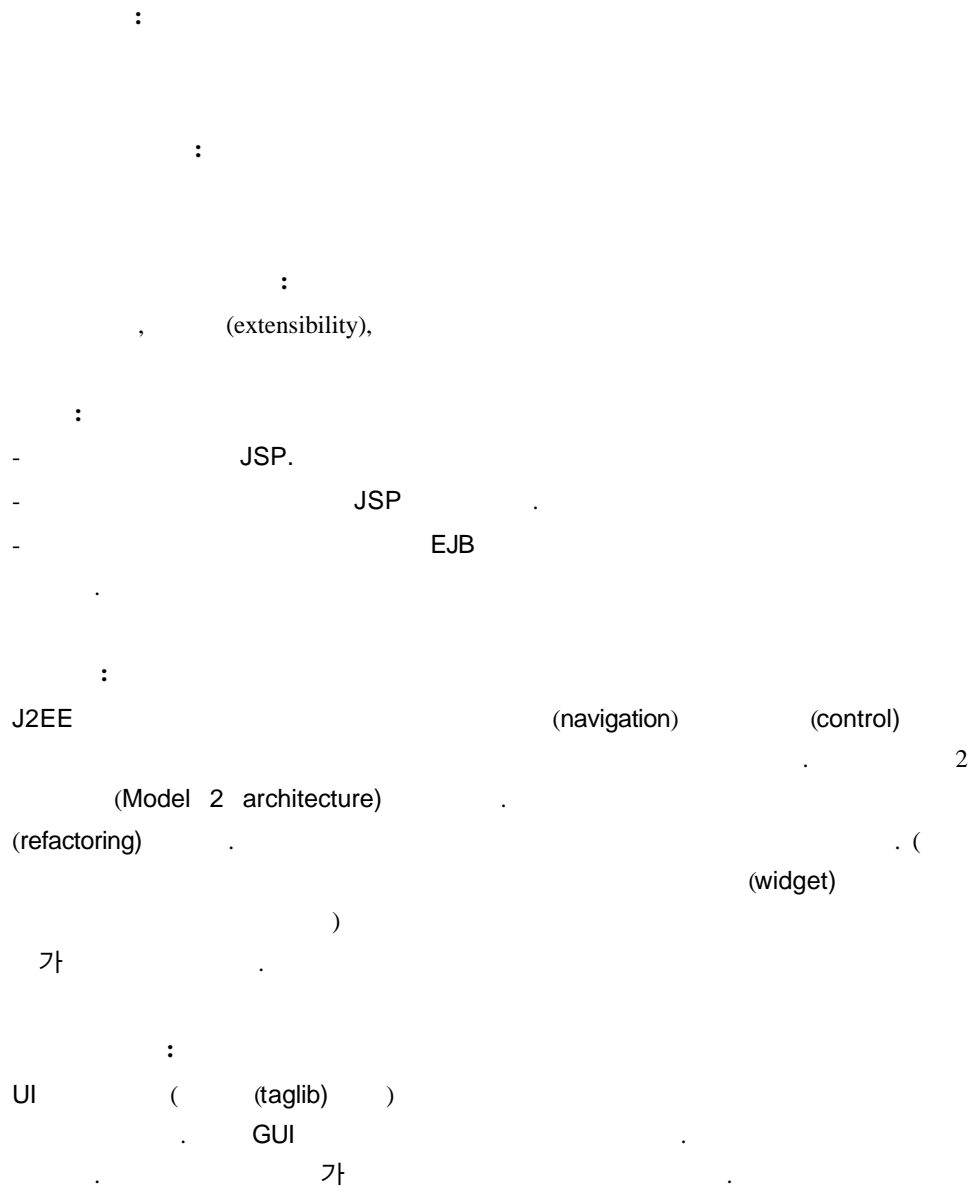
2 : (EJB)(Over-engineering(to EJB or not to EJB))

:

:

:
, ,
:
- EJB.
- EJB가 가
.
- EJB, ,
- EJB.
- () (data isolation).
:
(extreme programming)
.
(future average load requirement) (peak)
.
. J2EE
(server infrastructure)
.
가
가
:
. EJB EJB
(Home) (Finder) (Factory) EJB
(Remote) (Proxy) 가
가 (transparent load balancing) 가
가
가 EJB EJB
EJB
EJB
EJB

3 : (Not separating presentation logic from business logic)



4 : (Not deploying where you develop)

:
:
, (Parallel),
:
:
- .
- .
- 가 .
- (build) .
- , (production environment)
:
4
JDK 1.3 . 7 JDK 1.2.2
(production data)
가 .
가 .
- (data validation rule)
- (tested system behavior)
- (contracts between system components)(EJB-EJB
EJB- 가)
(exception) ,
:
(securtrity) .(" , ,
(Yeah, the screens work, now let's add in the user
validation stuff.)")

(political issue)가

!

5 : (Choosing the wrong vendors)

:

:

, , / ,

:

, , ,

:

-

-

가 , 가

-

. (IDE, IDE

,)

-

IDE,

:

5 가

10

IDE

가

. J2EE

(implementation)

가

가 ?
가
.IDE가 ()
)
:
1
IDE
6 : (Not knowing your
venders)
:
:
(, , / ,)
:
, ,
:
- 33%
- 가 가
:
supplied support resources) 가 (vendor-
()
가 (가 가)
EJB (GUI JSP)

" (Our schedule doesn't give us the time)"
"
.(Your schedule doesn't give you the time to not do it.)"

- :
- J2EE ? IBM BEA
- EJB 1.1 BEA
(WebLogic) 5.1 IBM (WebSphere) 3.5 ?
1. (configure) (administer)
 2. GUI
 3. (communicate) CORBA IIOP
CORBA (infrastructure) t3
 4. (Visual Age) 가 , IDE 가

IDE, , (configuration management)

가

7 :
designing for scalability or performance)

(Not

:
, ,
:
- .()
- 가
.
:
(scoping phase) 가 .
50
40 ,
(stored procedures) (batch processes)
OLTP (reworked OLTP aspects of your system)
가
:
2, 가
(upper bound)
(key requirement) ()
가 (transactional cache) 가)
가
, EJB .XP
.
가

8 : (Antiquated development processes)

:

:
,
:
, (code quality)
:
- : " X
.(First we design the system from scratch, then we sit down and code it in one
huge chunk of time)"
- 가 .
- .
- 가 .
:
XP (http://directory.google.com/Top/Computers/Software/Object-
Oriented/Methodologies/Extreme_Programming/)
:
JUnit , Ant XP
. (http://www.junit.org/
http://jakarta.apache.org/ant/index.html)

9 : (Failure to
employ frameworks)

:
:
, ,

:
, ,
:
-
-
- (exception handling)
- (low-level) .(
SQLException 가)
가? ?
가
- (Logging)
-
- (,)
- JSP
- (Data validation)
:
(lightweight frameworks)
, " (Frameworks Save the Day,
<http://www.javaworld.com/jw-09-2000/jw-0929-ejbframe.html>)"
:
(component-based)
(reuse factor) 0.9 90%
가 가
50%
가 ! , 가, ?

10 : 가
(Basing project plans and
designs on marketing blurb, not on technical fact)

(Note) : ()
10 .

:

,

:

:

, , (design quality),

:

- EJB 가 (portable)

.

-

-

:

가 (anyone with a vested interest outside of your project)

, (),

(white papers)

(<http://www.javaworld.com/javaworld/topicalindex/jw-ti-productreviews.html>)

.

().

()

3,4

IDE,

:

J2EE

J2EE

10 가?

10 . 가 . 가
가 ,
가 .
(on-
the-go training) (be
proactive and source). J2EE
(mentor) ,

- (Social aspects of software engineering)
- (가 가?)
-
-

가 .
!

가
가 .
가 .

1. ,EJB ,J2EE .

2. (EJB EJB가).
- 3.
- 4.
- 5.
- 6.
- 7.
- 8.
- 9.
10. 가