

---

<JSTORM>

---

Java Foundation



JSTORM  
<http://www.jstorm.pe.kr>

---

### Document Information

Document title:	Java Foundation
Document file name:	javaFoundation_ywlee_fundamental_jstorm_1.0_final.doc
Revision number:	<1.0>
Issued by:	< > <a href="mailto:ywlee73@hotmail.com">ywlee73@hotmail.com</a>
Issue Date:	<2001/08/19>
Status:	final

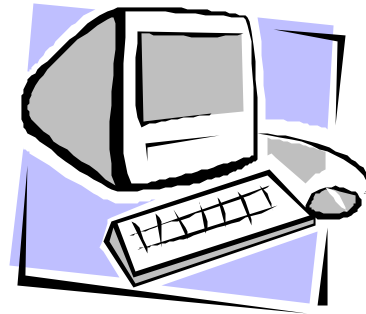
### Content Information

Audience	
Abstract	
Reference	..
Benchmark information	

## Table of Contents

<b>1 java</b>	<b>4</b>
java	4
	4
	5
,	6
java	6
	6
	8
<b>2 javac</b>	<b>11</b>
javac	11
	12
(dependencies)	13
javac	15
<b>3 (class path)</b>	<b>18</b>
	18
extension( )	18
extension	18
<b>4 Package</b>	<b>20</b>
	20
,	21
	22

1



# java

java . javac  
java .  
Java Virtual Machine (Java VM) (CPU ) 가  
Java VM . java  
Java VM java  
java .  
java , DOS prompt prompt .

# java

java . DOS prompt prompt  
java .  
WordProcessor.class  
WordProcessor .

java WordProcessor

Java VM Java VM가 WordProcessor.class

Java VM  
가 .  
Java VM java  
java -classpath < > < >  
“;”( ) “ ”  
“ ” , ZIP JAR  
가 .  
Java JAR , “ ”  
WordProcessor가,  
C: \ lib SpellChecker.jar . ,  
SpellChecker.jar JAR ,  
WordProcessor ,  
java -classpath . ;C: \ lib \ SpellChecker.jar WordProcessor  
Java VM SpellChecker.jar  
 (“.” ) , Java VM  
가 ,  
Exception in thread "main" java.lang.NoClassDefFoundError:  
< >  
.  
.  
.  
java -classpath C: \ lib \ SpellChecker.jar WordProcessor  
, Java VM , WordProcessor  
가 ,  
-classpath java , Java VM  
「 (class path) 」 .  
extension

, 「 (class path) 」, 「  
」 .

,

Java VM , java

```
public static void main(String[])
```

. 가 java  
가 , Java VM , public static void main(String[])

Exception in thread "main" java.lang.NoSuchMethodException: main

java

java

, -classpath

? java

"-? " "-help"
, java , java

java

?

**-classpath** < " ; " > , JAR, ZIP  
, Java VM 가 .  
(class path)

? Java VM ( )

**-version**  
( ), java Java VM .

? Java VM ( )

**-showversion**  
( ), , java Java VM .

?

**"-verbose" "-verbose:class"**  
, Java VM ,

? 가

**-verbose:gc**  
, Java VM 가 , . 가  
heap

? JNI

**-verbose:jni**  
, Java VM Java Native Interface(JNI)가 ,  
. JNI , CPU operating system , native code  
Java VM , JNI , native  
code Java VM 가

?

**-X**  
( ), .

" "

**?JAR**

<b>-jar</b>
, java JAR , Java VM JAR , JAR Java VM 가 . 가 가 가 . ,

, Sun ( , IBM ) Java VM  
가 . ,

**? (JIT )**

<b>-Xmixed</b>
, Java VM interpreter native code compiler , 가 , . Java VM , interpreter , Java VM 1 native code compiler Java VM CPU .

**? interpreter**

<b>-Xint</b>
, Java VM interpreter .

**? debug**

<b>-Xdebug</b>
, Java VM , .

**?**

<b>-Xbootclasspath:&lt; &gt;</b>
----------------------------------



(class path) , 「

? 가( )

**-Xbootclasspath/a:**< 가 >  
 , 가 .

? 가 ( )

**-Xbootclasspath/p:**< 가 >  
 , 가 .

?

**-Xfuture**  
 , Java VM  
 . Java VM Java VM( 1.1 )  
 . , Java VM 1.1 1.2  
 . Java  
 . Java VM -Xfuture  
 가 .

? 가

**-Xnoclassgc**  
 ( ), Java VM , 가 .

? 가

**-Xincgc**  
 , Java VM “ 가 , 가 ” , 가  
 . , 가 , 가  
 . , 가 10% .

?Java VM heap

**-Xms**<heap ( )>  
 , Java VM heap 가 .  
 heap , 1024 , 1 가  
 , “k” , 가 “m”  
 가 , ( ) 1024 heap

가 . , heap 1024  
.  
java -Xms1024k

**? Java VM heap**

**-Xmx<heap ( ) >**  
Java VM heap 가 .  
heap , 1024 , 2 가 .  
“k” , 가 “m”  
가 , 1024 heap  
가 . , heap 256 가 ,  
.  
java -Xmx256m

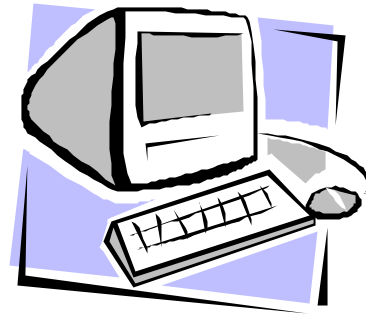
**? CPU filing**

**-Xprof**  
Java VM CPU filing .

**? CPU filing**

**-Xrunhprof**  
( ), Java VM filing 가 .  
.  
java -Xrunhprof:help

## 2



# javac

javac Java (.class) (.java)  
javac Java compiler . Java  
Compiler , javac  
가  
Java Virtual Machine(Java VM)  
, javac Java VM  
Java , 가

## javac

javac DOS prompt prompt . javac  
, DOS prompt prompt ,

## javac

, javac javac  
, PATH , javac 가 PATH

PATH가 , javac가 가  
,

**(Java 2 SDK ) \ bin \ javac**

, Java 2 SDK C: \jdk1. 3 , .

**C: \jdk1. 3 \ bin \ javac**

javac가 가 , PATH  
가 . , javac 가 ,  
가 .

, WordProcessor.java , javac .

**javac WordProcessor.java**

WordProcessor.java가 Java , javac  
WordProcessor.class . javac  
WordProcessor.java Scheduler.java

**javac WordProcessor.java Scheduler.java**

, javac . ,

**javac \*. java**

javac 가 , 가 . 2 가 .

```
WordProcessor.java (
    ) C:\lib\SpellChecker.jar가 , javac
    , -classpath
```

**javac -classpath .:C:\lib\SpellChecker.jar  
WordProcessor.java**

```
    , extension( )
    (class path) , extension( )
```

### (dependencies)

```
javac (dependencies)
    , javac
    가
    javac . javac Java VM
    , extension( )
    , -sourcepath
    , javac
    , javac , (dependencies)
    , 2
Car.java Engine.java ,
```

```
public class Car {  
  
    public Engine engine;  
  
}
```

**Car.java:**

```
public class Engine {  
  
}
```

**Engine.java:**

**javac Car.java**

```
javac Car.java Engine.java , javac  
javac Car.java Engine , javac Car.java Engine.class , javac  
Engine.java Engine.class Engine.java , javac Engine.java  
Engine.java
```

```
public class Engine {  
    public int horsepower;  
}
```

**Engine.java**

**javac Car.java**

```

, Engine.java
javac Car.java , javac Engine가 , javac
Engine Engine.class
Engine.java Engine.class Engine.java
Engine.java , javac
Engine.java , javac Engine.java
, javac (dependencies)
(dependencies)
, javac
가 ( 3 , ).
, javac

```

javac

?

<b>-classpath &lt; &gt;</b>
javac가 , 가 , 가 , " , (class path) 가" , ,

?

<b>-d &lt; &gt;</b>
javac , < >

?

<b>-sourcepath &lt; &gt;</b>
javac가 , javac ,

?

가

<b>-g:&lt; ( ) &gt;</b>
가 가 . -g:source , javac

-g:lines	, javac	가	.
-g:vars	, javac	가	.
	javac	, -g:	“, ”
g:source, vars	.	-g	, 가
가	.		’ -
-g:none	, javac	.	
-g	, javac	가	.
	, -g:lines, source	.	.

? ( )

<b>-O</b>
, javac
... , -O . , -O
, javac .

?

<b>-nowarn</b>
, javac (Warning)

?

<b>-verbose</b>
, javac가
, 가

?

<b>-deprecation</b>
, javac
.
, 가
Java VM
가
, javac
가,



?

<b>-bootclasspath &lt; &gt;</b>
, extension path) , 「 (class

? extension

<b>-extdirs &lt;extension( ) &gt;</b>
, extension extension extension . extension , 「extension( ) 」 .

? Java

<b>-target &lt; &gt;</b>
, , 1.1, 1.2, 1.3 3 Java VM .
1.1 target , 1.1 Java VM , javac -target 1.1 . -
1.2 , 1.2 Java VM .
1.3 , 1.3 Java VM .

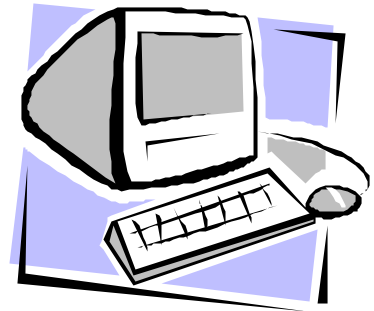
?

<b>-encoding &lt; &gt;</b>
, encode , javac . javac , operating system .

( )

-bootclasspath/ -extdirs/ -target , , JDK1. 1 Java VM , Java VM

### 3



## (class path)

▪

extension( ) -  
extension( ) , ( )  
extension ) , ,  
가 , 가  
extension , 가

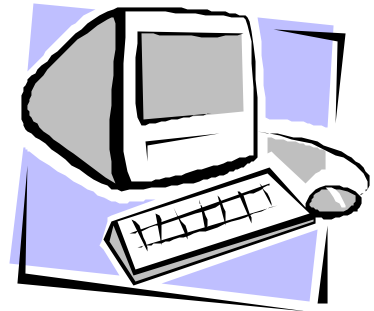
extension  
extension 2 가 ,  
(1)  
, Java , 가  
. 가 ,  
가 . javac  
. Java VM가  
, 「 (class path) 」 .

, JAR , “  
”  
, 가 , “ ”  
.  
, Java 2 SDK가  
jre \ lib \ ext 가 Java 2 SDK C: \jdk1. 3  
, C: \jdk1. 3 \ jre \ lib \ ext가 .  
JAR , Java 2 SDK  
Standard Edition , Java 2 Runtime Environment Standard  
Edition(JRE) Java C: \ Program  
Files \ JavaSoft \ JRE \ < > \ JRE  
, C: \ Program Files \ JavaSoft \ JRE \ < > \ lib \ ext가 . ,  
JAR 가 , java ,  
JRE java , extension  
C: \ Program Files \ JavaSoft \ JRE \ < > \ lib \ ext가 .  
, javac , Java 2 SDK java .  
, extension , Java 2 SDK  
C: \jdk1. 3 , C: \jdk1. 3\jre \ lib \ ext가 . ,  
가 JAR 「 가  
」 「 가  
.

(2)

, JAR ,  
가 . ,  
, JAR , JAR  
. Java VM JAR , JAR  
가 . ,  
가 .  
, JAR . ,  
.  
, ,  
.

# 4



---

## Package

3

- 1.
- 2.
- 3.

(1)

가

, Java  
java.io ,

,  
java.net

(2)

Java VM

, 가

, 가

가

, 가

(3)

```
Car.java  
  
package kr.pe.jstorm.vehicle;  
  
import java.lang.*;  
import kr.pe.jstorm.vehicle.*;  
  
Car car = new Car();  
  
import kr.pe.jstorm.vehicle.Car;  
  
Car car = new Car();  
  
import java.lang.*;  
import kr.pe.jstorm.vehicle.*;  
  
import kr.pe.jstorm.vehicle.*;
```

```
가 import java.io . , kr.pe.jstorm.vehicle
import kr.pe.jstorm.vehicle. *;
import java.io. *;

import , 가 . ,
kr.pe.jstorm.vehicle java.io ,
NotActiveException가 , import ,
compiler 가 , compile
error가 .

import kr.pe.jstorm.vehicle. *;
import java.io. *;

, import .

import kr.pe.jstorm.vehicle. *;
import java.io. *;
import kr.pe.jstorm.vehicle.NotActiveException;

, , kr.pe.jstorm.vehicle
NotActiveException java.io NotActiveException
java.io .

, Java
VM 가 , 가 .
kr.pe.jstorm Example ,
"." 가
kr \ pe \ jstorm Example.class .
C: \ classes , C: \ classes \ kr \ pe \ jstorm \
Example.class .
```

Java VM , . , kr.pe.jstorm  
Example , .

java kr.pe.jstorm.Example